



WELCOME

to Command Line for Creatives

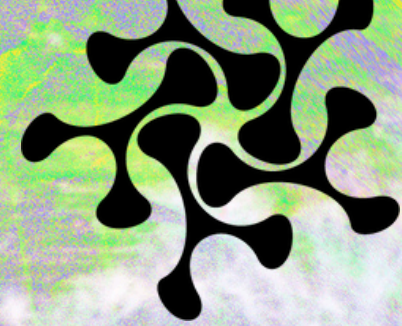
Following online tutorials or trying to get up and running with various dweb tools often involves using the command line interface, or cli, but they rarely actually teach cli itself. It can get forgotten or overlooked, and experienced programmers tend to forget they ever learned it. This class will focus on cli exclusively, looking at foundational skills that will make all other explorations of software development and dweb more approachable. A little familiarity goes a long way: many small computer tasks can be done with the command line: create and read files, running programs, checking on what your computer is currently doing, etc - and with time and practice, huge productivity, new approaches to using your computer, and yes, even fun, can be unlocked.

TABLE OF CONTENTS

- 01 Intro
- 02 What is the Command Line?
- 03 Orientation: Who are we and where are we?
- 04 You may have heard of something called git ...
- 05 Shortcuts and file manipulation
- 06 Break
- 10 Connecting to other people's computers
- 11 Running a program
- 12 Writing a program
- 13 Fun and Games



WHAT IS THE COMMAND LINE

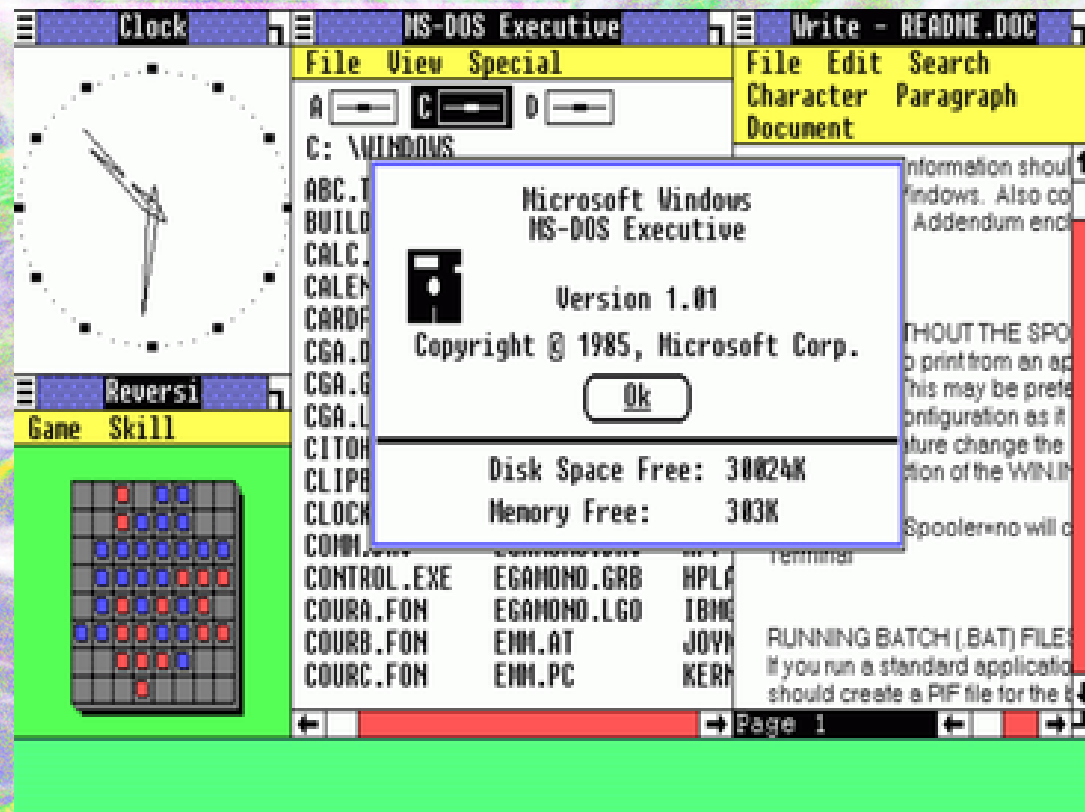


```
1. Sep 15:53 ..
2. Sep 15:53 bin -> usr/bin
3. Sep 2015 boot
4. Sep 09:31 dev
5. Sep 15:50 etc
6. Sep 09:32 home
7. Sep 15:52 lib
8. Sep 2015 lib64
9. Sep 2015 lost+found
10. Jul 10:01 mnt
11. Aug 22:45 opt
12. Sep 2015 pri
13. Sep 15:52 pro
14. Aug 15:37 run
15. Sep 15:50 sbin
16. Sep 2015 srv
17. Sep 15:51 sys
18. Sep 15:45 usr
19. Aug 15:39 var
20. Jul 10:25 vmlinuz
```



After today, this could be you

Before we talk about the CLI (or Command Line Interface) let's point out that we're using a GUI or Graphical User Interface – before GUIs were invented, computers had only a CLI

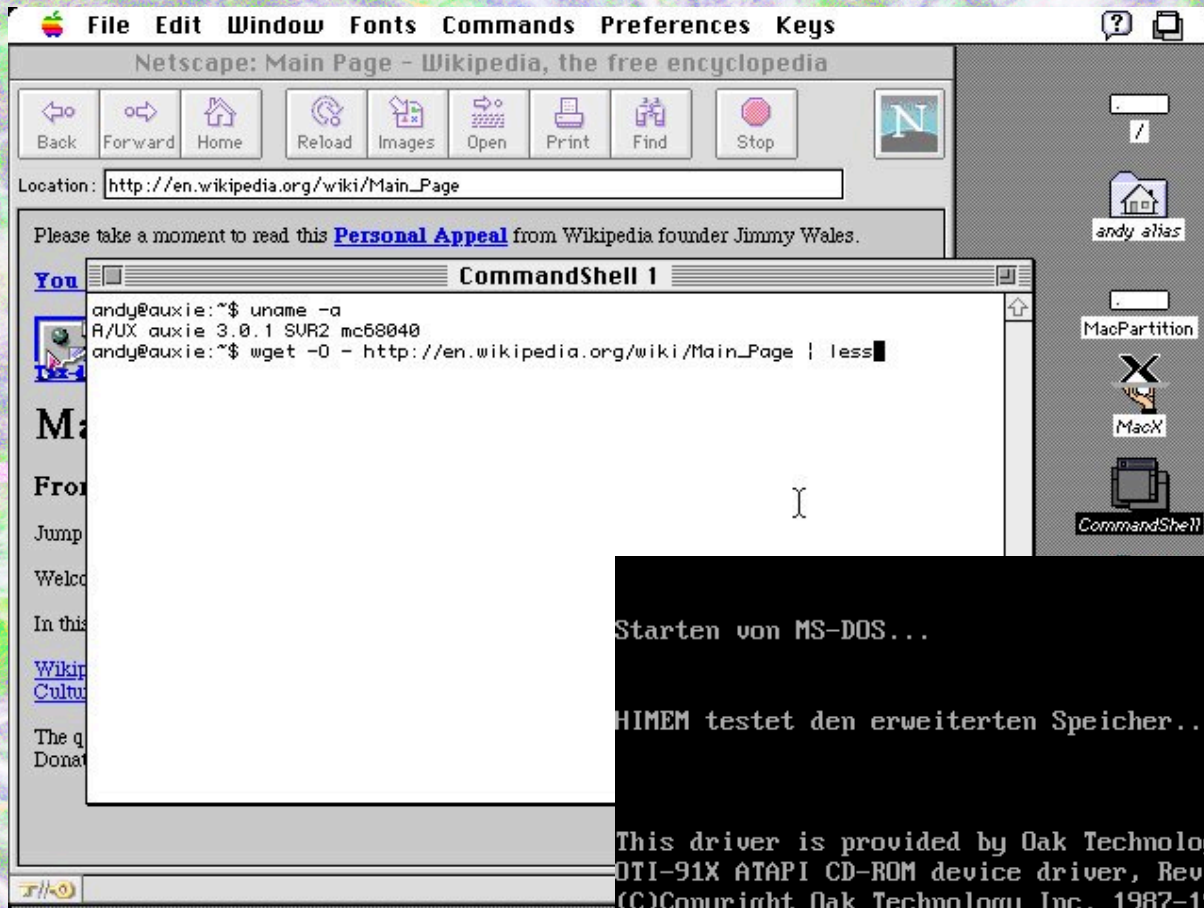




ASR-33 Teletype from 1963

**some of the oldest
computers used CLIS**





some images of early MAC
and Windows CLIs

Starten von MS-DOS...

HIMEM testet den erweiterten Speicher...beendet.

This driver is provided by Oak Technology, Inc..
ATI-91X ATAPI CD-ROM device driver, Rev D91XV352
(C)Copyright Oak Technology Inc. 1987-1997

Device Name : CDROM
Transfer Mode : Programmed I/O
Number of drives : 1

C:\>C:\DOS\SMARTDRV.EXE /X

MSCDEX Version 2.23

Copyright (C) Microsoft Corp. 1986-1993. Alle Rechte vorbehalten.

Laufwerk D: = Treiber CDROM Gerät 0

C:\>_

The command line is also often called the Shell, because it's the part of the computer that is presented to the outside (aka, to you) and it protects more vulnerable functions



There are various different shells, though they have similarities, they are not all the same - this is a family tree of various versions.

